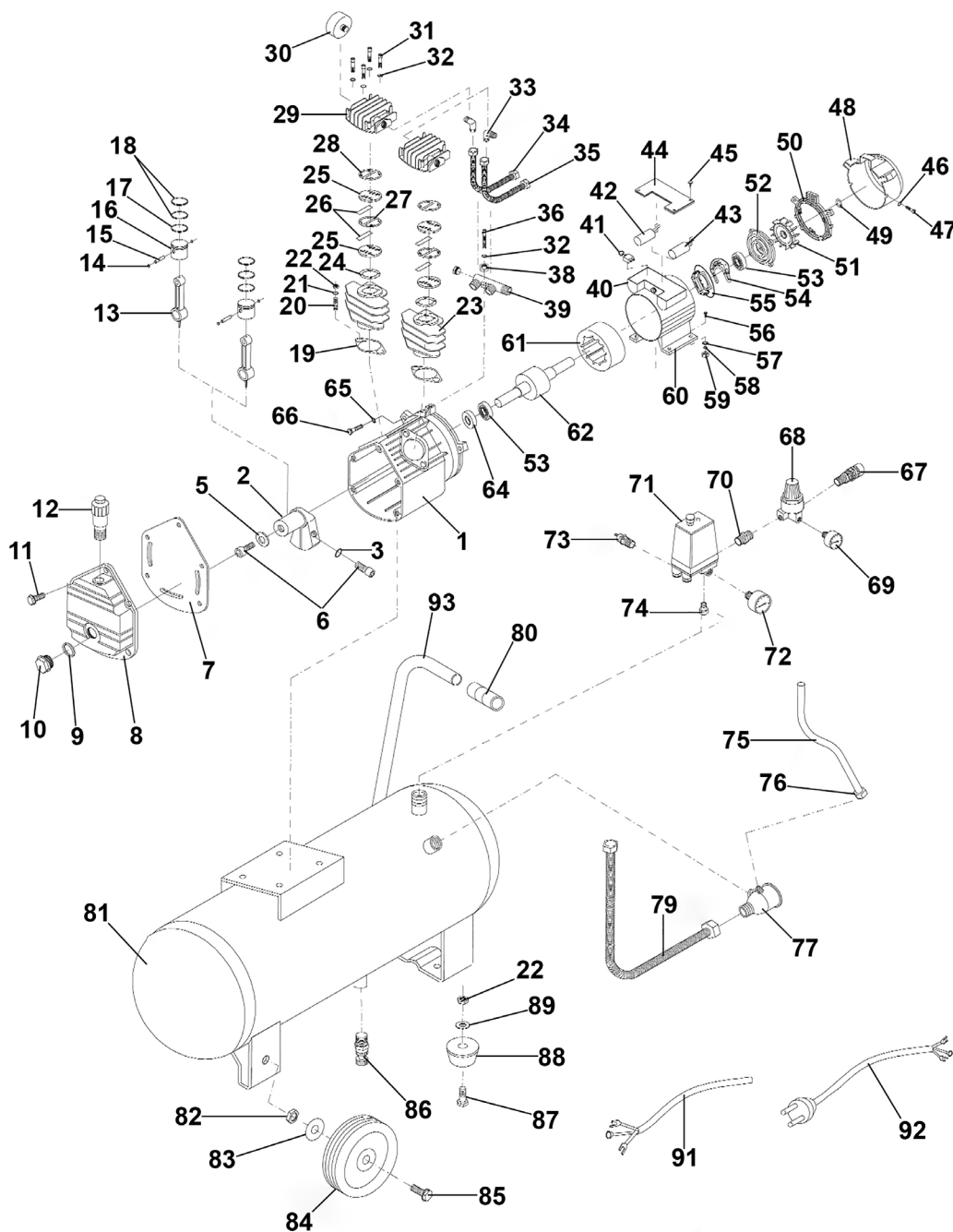


Parts Information: 100L V-Twin Direct Drive Air Compressor 3hp Model No: SAC10030VE.V2



Item	Part No.	Description
1	SAC5030VE2.01	Crankcase
2	SAC5030VE2.02	Crank Shaft
3	RW830.S	Repair Washer M8 x 30mm
5	RW825.S	Repair Washer M8 x 25mm
6	SAC2420EV2.03	Left Hand Thread Socket Cap Bolt M8 x 22mm Black
7	SAC5030VE2.07	Rubber Gasket
8	SAC5030VE2.08	Crankcase Cover

Item	Part No.	Description
9	SAC5030VE2.09	Rubber Seal
10	SAC5030VE2.10	Oil Sight Glass
11	SAC5030VE2.11	Bolt
12	SAC5030VE2.12	Breather 5/8" UNF
13	SAC5030VE2.13	Connecting Rod
14	SAC5030VE2.14	Retaining Ring
15	SAC5030VE2.15	Piston Pin

NOTE: It is our policy to continually improve products and as such we reserve the right to alter data, specifications and component parts without prior notice. There may be alternative versions of this product, please contact us should you require this information.

IMPORTANT: No liability is accepted for incorrect use of product. Spare parts must be fitted by a competent person

WARRANTY: Guarantee is 12 months from purchase date, proof of which will be required for any claim.



Parts Information:
100L V-Twin Direct Drive Air Compressor
3hp
Model No: SAC10030VE.V2

Item	Part No.	Description
16	SAC5030VE2.16	Piston
17	SAC5030VE2.17	Piston Ring
18	SAC5030VE2.18	Piston Ring Set (2 Pieces)
19	SAC5030VE2.19	Crankcase Gasket
20	SCB820.S	Socket Cap Bolt M8 x 20mm
21	SWM8.S	Spring Washer M8
22	SN8.S	Steel Nut M8
23	SAC5030VE2.23	Cylinder
24	SAC5030VE2.24	Cylinder Gasket
25	SAC5030VE2.25	Valve Plate (Pair) Ø73.75mm
26	SAC5030VE2.26	Reed Valve 47 x 10mm
27	SAC5030VE2.27	Valve Plate Gasket
28	SAC2420EV2.24	Cylinder Head Gasket
29	SAC5030VE2.29	Cylinder Head
30	SAC5030VE2.30	Air Filter
31	SCB645.SB	Socket Cap Bolt M6 x 45mm Black
32	SWM6.S	Spring Washer M6
33	SAC5030VE2.33	Elbow 3/8"BSP (M)- 3/8"BSP (M)
34	SAC10030VE.34	Exhaust Pipe & Nut 260mm
35	SAC5030VE2.35	Exhaust Pipe & Nut, Short 235mm
36	SFS650.S	Hex Head Flange Bolt M6 x 50mm
38	SN6.S	Steel Nut M6
39	SAC5030VE2.39	Manifold
40	SAC5030VE2.40	Capacitor Box 195 x 120mm Twin Capacity
41	SAC5030VE2.41	Overload Protector, Thermal Cut-Out
42	SAC5030VE2.42	Capacitor 200µF 450V AC
43	SAC5030VE2.43	Capacitor 35µF 450V AC 50/60Hz
44	SAC5030VE2.44	Lid, Capacitor Box
45	MSP48.S	Machine Screw Pan Head Phillips M4 x 8mm
46	FWM5.S	Flat Washer M5
47	SAC5030VE2.47	Bolt
48	SAC5030VE2.48	Fan Cover
49	RE231.05	External Circlip ID: 12.8mm
50	SAC5030VE2.50	Fan Plate
51	SAC5030VE2.51	Fan
52	SAC5030VE2.52	Rear Bearing Housing
53	B/6205-2RS	Bearing 6205-2RS
54	SAC5030VE2.54	Centrifugal Film
55	SAC5030VE2.55	Centrifugal Switch
56	SFS825.S	Hex Head Flange Bolt M8 x 25mm

Item	Part No.	Description
57	SAC5030VE2.57	Washer
58	SAC5030VE2.58	Spring Washer
59	SAC5030VE2.59	Nut
60	SAC5030VE2.60	Electricity Cylinder
61	SAC5030VE2.61	Stator
62	SAC5030VE2.62	Rotor Assembly
64	SAC5030VE2.64	Oil Seal TC (22 x 47 x 7 x 4mm)
65	SAC5030VE2.65	Spring Washer
66	SAC5030VE2.66	Bolt
67	AC01	Coupling Body Male 1/4"BSPT - Please see Catalogue
68	SAC5030VE2.68	Regulator
69	SAC5030VE2.69	Pressure Gauge 180psi Back Fitting Ø42mm
70	SA1/1414	Double Male Union 1/4"BSPT to 1/4"BSPT - Please see Catalogue
71	SAC5030VE2.71	Pressure Switch 20A 12Bar 175psi
72	SAC5030VE2.72	Pressure Gauge 180psi Back Fitting Ø50mm
73	SAC5030VE2.73	Safety Valve 8Bar 1/4"bsp (M)
74	SAC5030VE2.74	Adaptor 1/4"bsp (M)-1/2"bsp (M) 50mm
75	SAC5030VE2.75	Unloading Pipe
76	SAC5030VE2.76	Unloading Nut
77	SAC5030VE2.77	Check Valve
79	SAC5030VE2.79	Exhaust Pipe & Nut
80	SAC5030VE2.80	Handle Grip
81	SAC10030VE.V2-81	Tank 100L
82	SAC5030VE2.82	Nut
83	FWM10.S	Flat Washer M10
84	SAC5030VE.V3-84	Wheel, Fixed Plastic (Ø170 x 32 x Ø12mm Bore)
85	SAC5020EV2.53	Wheel Bolt, M10 x 55, 18mm Thread
86	SAC5030VE2.86	Drain valve 3/8"bsp (M)
87	SS830.S	Hex Head Set Screw M8 x 30mm
88	SAC5030VE2.88	Cushion Foot
89	FWM8.S	Flat Washer M8
91	SAC5030VE2.91	Electrical Wire
92	MC3CX1.5	Mains Cable Blk, 3 Core, 1.5mm ² (Sold per Metre)
93	SAC10030VE-V2-85	Tank Handle - Green
--	SAC5030VE229C	Plastic Cylinder Head Cover (Not Shown)
--	SAC10030VE39A	Unloader Valve (Not Shown)
--	SAC5030VE2.P	Complete Pump, Twin Cylinder (c/w Motor & Delivery Pipes)(Not Shown)

NOTE: It is our policy to continually improve products and as such we reserve the right to alter data, specifications and component parts without prior notice. There may be alternative versions of this product, please contact us should you require this information.

IMPORTANT: No liability is accepted for incorrect use of product. Spare parts must be fitted by a competent person

WARRANTY: Guarantee is 12 months from purchase date, proof of which will be required for any claim.

Jack Sealey Ltd t/a Sealey Group, Kempson Way, Suffolk Business Park, Bury St Edmunds, Suffolk, IP32 7AR UK
Jack Sealey (EU) Ltd t/a Sealey Group, Farney Street, Carrickmacross, Co. Monaghan, A81 PK68 Ireland
Tel: 01284 757500 • **Email:** sales@sealey.co.uk • **Web:** www.sealey.co.uk